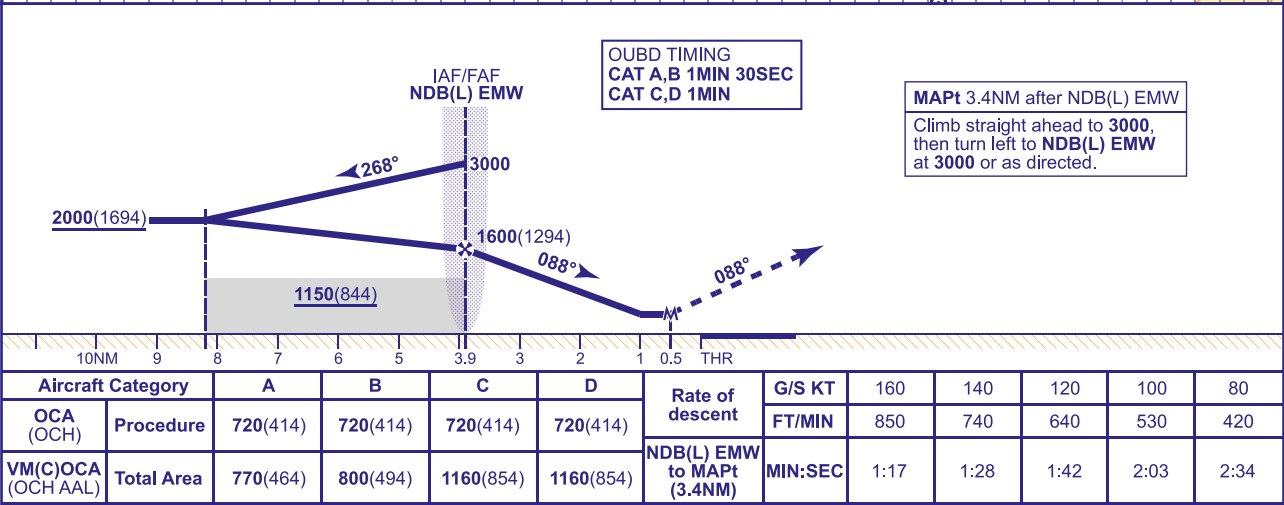
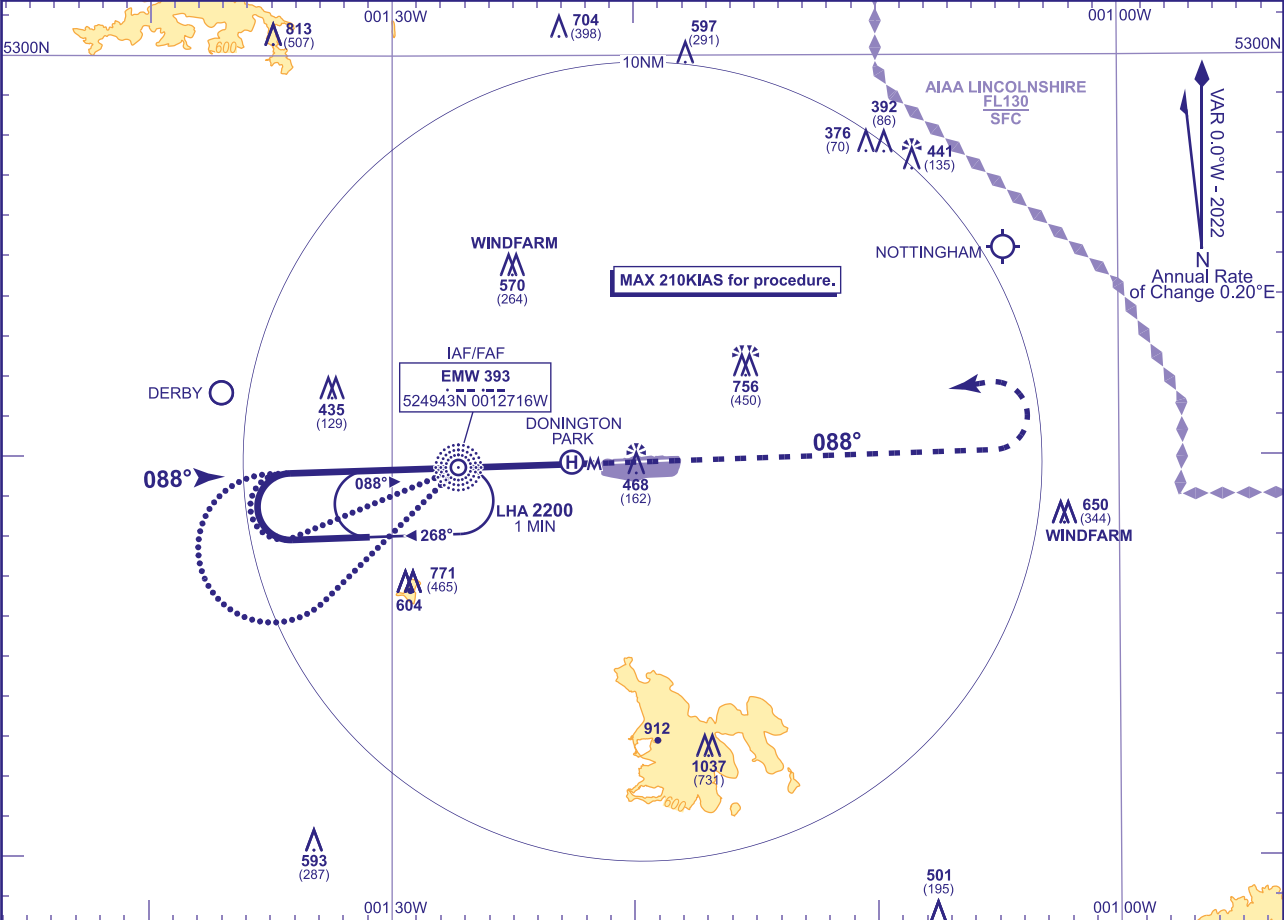


INSTRUMENT APPROACH CHART - ICAO

EAST MIDLANDS

NDB(L) Y
RWY 09
(ACFT CAT A,B,C,D)

 MSA 25NM ARP	RAD	126.180, 134.180	EAST MIDLANDS RADAR	AD ELEVATION	306	NDB(L) Y RWY 09 (ACFT CAT A,B,C,D)
		120.130	EAST MIDLANDS DIRECTOR	THR ELEVATION	306	
	TWR	124.005	EAST MIDLANDS TOWER	OBSTACLE ELEVATION 1037 AMSL (731) (ABOVE THR)		
		121.905	EAST MIDLANDS GROUND			
	ATIS	122.680	EAST MIDLANDS INFORMATION	BEARINGS ARE MAGNETIC		
				TRANSITION ALTITUDE	6000	



ALTERNATIVE PROCEDURE
Notify ATC. Fly outbound leg of baseturn on NDB(L) EMW QDR 248° for 1MIN 45SEC (CAT A,B), NDB(L) EMW 231° for 1MIN 15SEC (CAT C,D) descending to not below **2000(1694)**, then turn right to establish on the FAT. MAX 210KIAS.

NOTE 1 Aircraft unable to receive DME I-EMW notify ATC.
2 Lowest altitude to commence procedure from hold is **3000**.
3 Aircraft will normally be required to hold not lower than **3000**.

CHANGE (12/25): CHART TITLE REVISED.

AERO INFO DATE 22 SEP 25

AD 2-EGNX-8-6